

SARASOTA 27
Observe Slow Speed and Idle Speed Signs






RENTAL BOATS NOT ALLOWED BEYOND THIS POINT

BOAT RENTAL
BAIT & TACKLE
Classic BEACH & BOATING WEAR



Friendly Staff

RENTAL BOATS NOT ALLOWED IN GULF OF MEXICO



CB's
SALTWATER OUTFITTERS
SINCE 1959

Channel Markers

Keep these markers on the side of the boat closest to the inland (the east side).

Keep these markers on the side of the boat closest to the Gulf (the west side).

Keep between the markers while underway.

RENTAL BOATS NOT ALLOWED BEYOND THIS POINT
 COLREGS DEMARCATION LINE 80.7501 (see note A)
 Obstr Fish Haven PA (auth min 17 ft)

Obstr Fish Haven PA (auth min 17 ft)



1249 STICKNEY POINT ROAD

941-349-4400

SIESTA KEY, FLORIDA



BOAT RENTALS
BAIT & TACKLE
SPORTSWEAR
FISHING CHARTERS

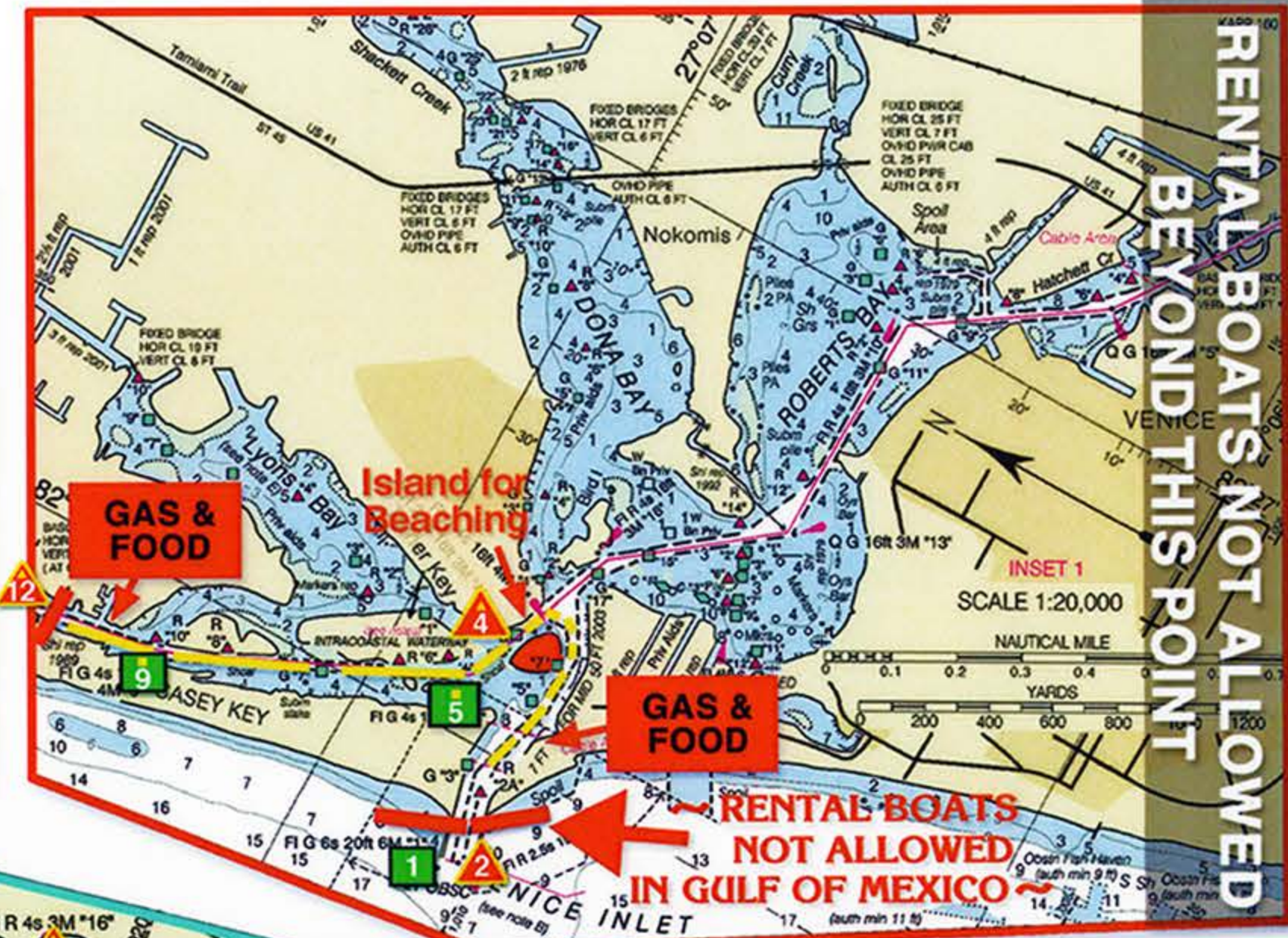


www.cbsoutfitters.com



BOAT RENTALS

- DECKBOATS
- PONTOONS
- RUNABOUTS
- CENTER CONSOLES



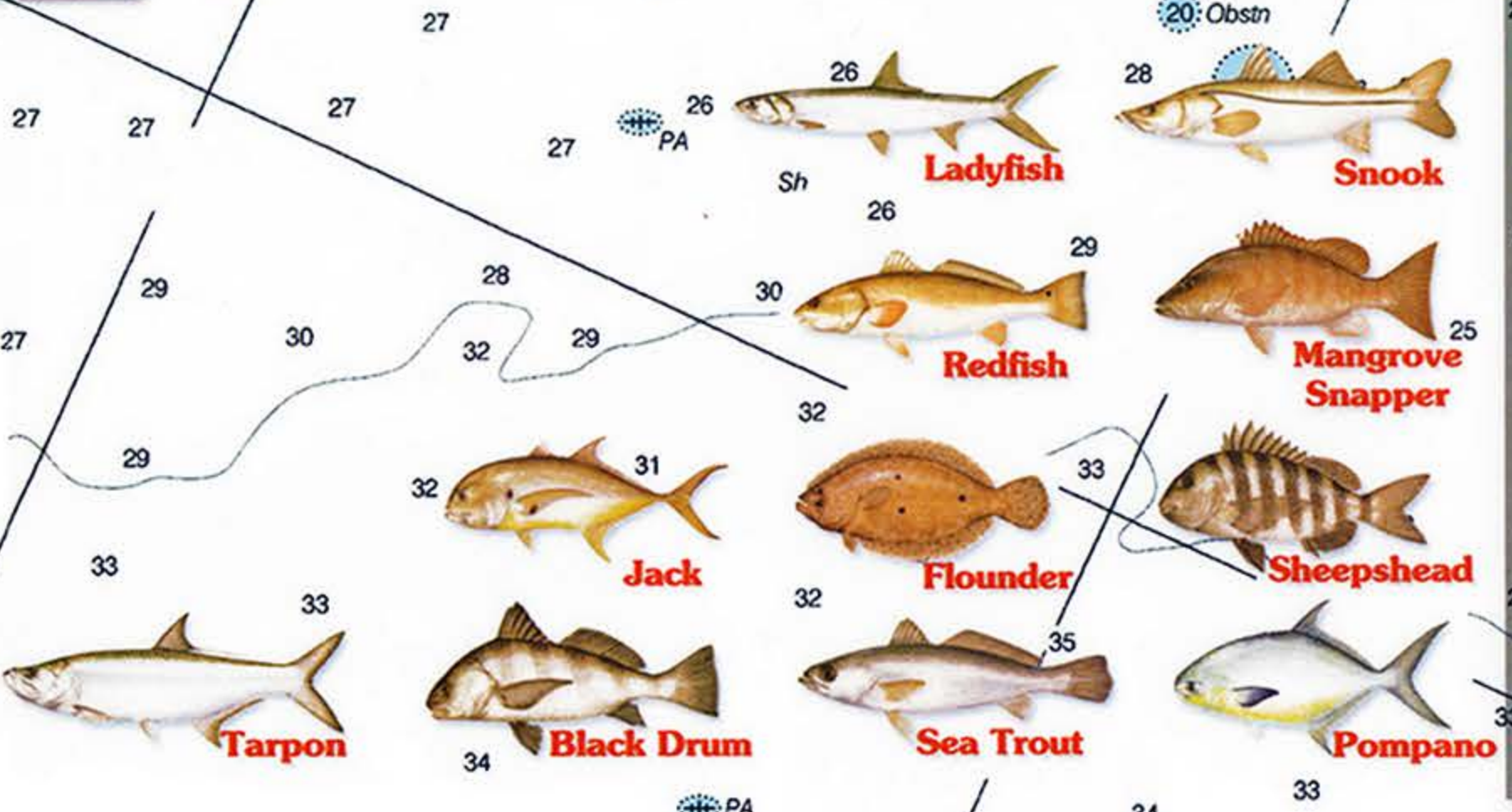
- Engine won't start!**
1. Make sure the shifter is in neutral.
 2. Make sure the red kill switch lanyard is attached to kill switch located below engine key.
 3. Choke engine (by pushing the key on most boats) and turn the key to start the engine. **Do not run the starter for more than 5 seconds at a time, as you will drain your battery and may damage the starter.**
 4. If the engine still won't start, set an anchor, then call us.

- Run Aground!**
1. Turn the engine off and tilt it up.
 2. Use the paddle to push into deeper water.
 3. Tilt the engine back down and restart.
 4. ****IMPORTANT**** If the engine is not pumping water or there is severe propeller damage, do not run the boat. Set the anchor and call us.

- Channel Markers**
- ▲ Keep these markers on the side of the boat closest to the inland (the east side).
 - Keep these markers on the side of the boat closest to the Gulf (the west side).
 - Keep between the markers while underway.



Visit Us Next Door



RENTAL BOATS NOT ALLOWED BEYOND THIS POINT